



RETAIL SPACE & OFFICE SUITES

282 MERRIMACK STREET | LAWRENCE, MA

A Sophisticated Waterfront Campus

Serving as the focal point of the Riverwalk Innovation District, The Pavilion provides a place for tenants and residents to work and play. Imagine a deluxe retail storefront surrounded by restaurants and office suites, where your store can truly thrive. Directly attached to a 1,250-car parking garage, The Pavilion features a regulation size football field that hosts events and tournaments overlooking the Merrimack River. Move your business to The Pavilion at Riverwalk, and take advantage of everything this unique campus setting has to offer.

PAVILIONRIVERWALK.COM



PAVILION
RIVERWALK

1ST FLOOR | 282 MERRIMACK STREET

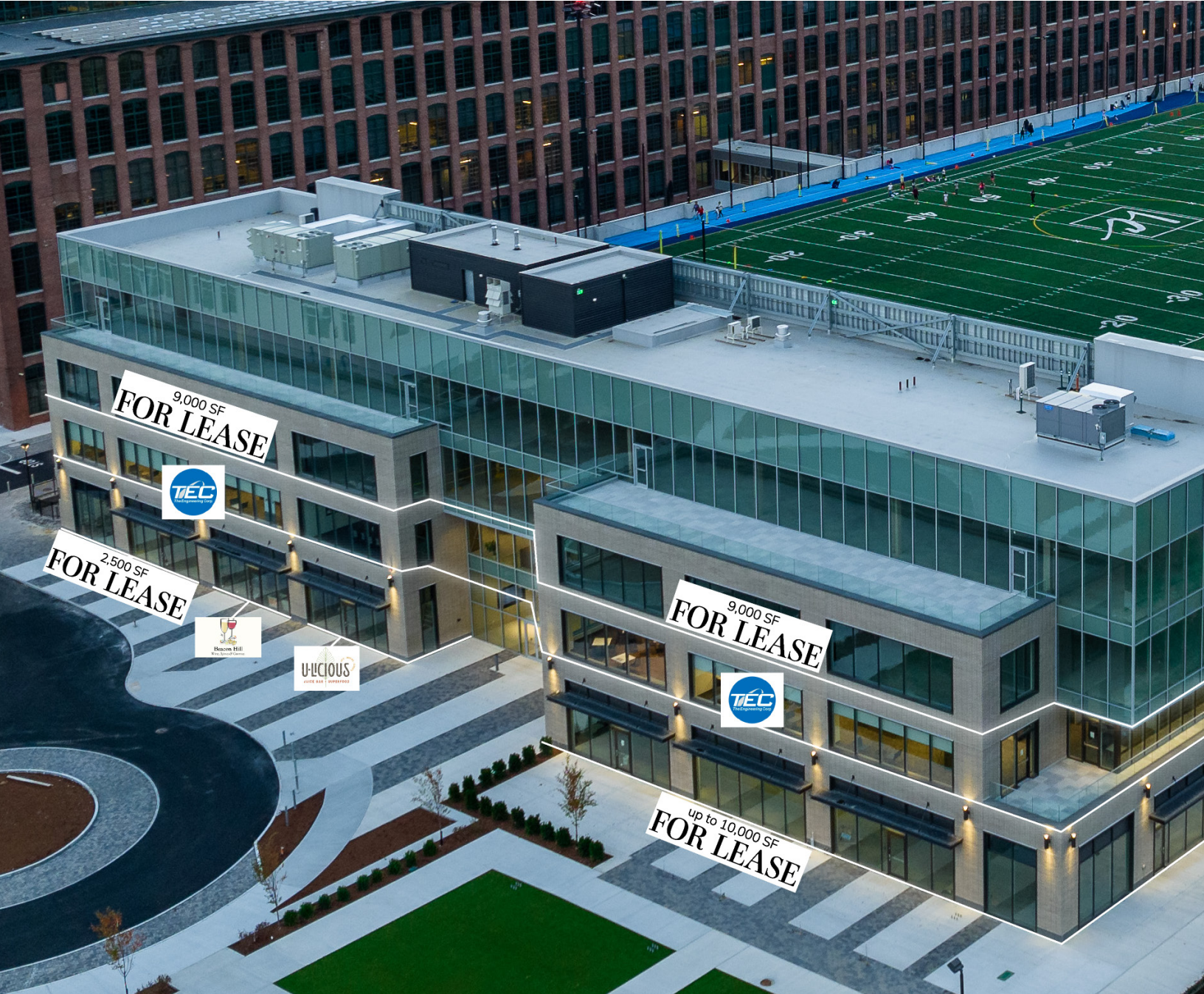


11,010 SF AVAILABLE



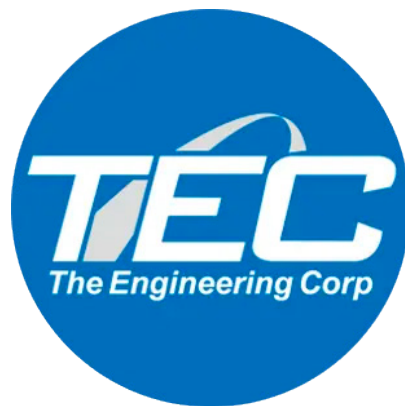
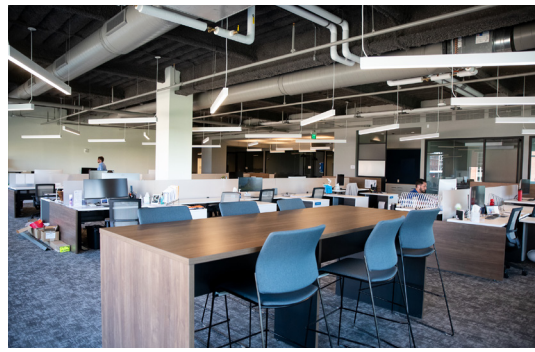
18,000 SF AVAILABLE

282 MERRIMACK STREET TENANT MAP



29,010 SF AVAILABLE

282 MERRIMACK STREET



TEC

282 MERRIMACK STREET



U-LICIOUS

THE NEW CHAPTER OF RIVERWALK

CLASS A: Retail & Office Suites

TOTAL BUILDING: 80,000 SF

TOTAL AVAILABLE:

Up to 2,500 SF Retail Space

Up to 18,000 SF Office Space

YEAR BUILT: 2021

AMENITIES INCLUDE:

Conveniently located off Route 495, minutes from Routes 93 & 95, and directly adjacent to the MBTA. Enjoy numerous restaurants and cafes, residential, health & fitness, medical, optometry and dental, education, salons, child care, access to transit, and pet daycare with more offerings within easy walking distance. Plus, a rooftop turf football field with spectacular views for sports games and community events.



Urban Innovation District

Bridging historic architecture with smart-city technology and sustainable design features, we are developing a destination that will grow alongside our neighbors, support local businesses and create new public spaces for all to enjoy.



Unprecedented Parking Structure

At the center of our ground-up construction project is a unique structure for 1,250 vehicles, but the main feature will be on the top level—a regulation-size turf football field. Not only will tenants be able to run on the in-laid track, but local football, lacrosse and soccer teams will hold practices, hone their skills and play games here.



A Sophisticated Waterfront Complex

This integrated building will offer a modern design with endless opportunities for new and exciting retail storefronts, restaurant concepts, conference centers and a variety of upscale, flexible office suites with direct access to some of the most iconic views of the Merrimack River.

PAVILION RIVERWALK

**FOR MORE INFORMATION,
PLEASE CONTACT:**



SCOTT MOREAU

Lupoli Companies

M: 978.479.5852

E: smoreau@lupolico.com



LAWRENCE BERGMAN

Lupoli Companies

P: 978.645.6292

M: 215.779.1915

E: lbergman@lupolico.com



PAVILIONRIVERWALK.COM
282 MERRIMACK STREET | LAWRENCE, MA 01843

